

## Project Status

The Gap Closure Trail Study will last 18 months. To date, the study team has completed data collection and is beginning to look at possible alternative alignments to Close the Gap through Plainville and into New Britain for a connection to the CT**fastrak** Station. In July the Team reached out to the communities to listen to their input on the project and what they would like for the community to look like in the future through Focus Group meetings.

**There were two focus group sessions held on July 26-27,** in both communities of Plainville and New Britain where 35 people were in attendance from a variety of community stakeholder groups sharing their knowledge and ideas! The next steps are for the Team to put together the existing conditions document and gather more of your input on the study. There will be a set of Collaborative Workshops in Early October and we would love your input.

### PROJECT SCHEDULE

**OCTOBER 2016**  
Collaborative Planning Workshops  
Trail Alignment Alternatives

**JANUARY 2017**  
Collaborative Planning Workshops  
Trail Alignment Refinement

**AUGUST 2017**  
Public Informational Meeting  
Trail Alternatives

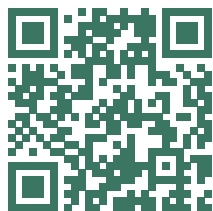
## Other Ways to Get Involved

Our first survey was issued back in mid-July in three languages; English, Spanish, and Polish. To date over 680 people have taken the survey letting our study team know where and how often they use trails, buses!

We would be thrilled if you can attend one of the meetings and talk to us in person, however, we understand busy lives and realize this may not be realistic. If you can't attend an upcoming meeting, please visit our website [www.gapclosurestudy.com](http://www.gapclosurestudy.com) and click on "**Participate**".

On this page you will find an area to "Submit your questions and sign-up for updates". You will also be able to take our two (2) surveys, which will help us understand more about your community, such as:

- › Do people in your community bike and walk?
- › Where are they going?
- › What is the primary reason for biking and walking in your community?
- › What type of bicycle and pedestrian accommodations would you use?



To learn more about the study and progress to date, please visit: [www.gapclosurestudy.com](http://www.gapclosurestudy.com).

For information not found on the website, please contact:  
**Timothy Malone**  
Capitol Region Council of Governments  
[tmalone@crcog.org](mailto:tmalone@crcog.org) | (860) 522-2217 x224



Public Informational Meeting - July 2016

# Get involved in closing the GAP!

## GAP Closure Trail Study

The focus of the Study is to evaluate potential alignments for the Farmington Canal Heritage Trail (FCHT) through Southington (north of West Queen Street) and Plainville to the Farmington town line with a connection to New Britain's bicycle network and the CT**fastrak** station.

The FCHT is an 84 mile multi-use trail stretching from New Haven, Connecticut, to Northampton, Massachusetts. Most of the trail has been completed, but a significant gap exists in Plainville, and Southington. To increase connectivity and mobility, the study team will reach out to the greater community to better understand where folks would like to go and what a trail through their community would look like.

Would you like other options for traveling through your town other than in the car? How would you prefer to move around your community? Where do you think the trail should go?

These are all important questions we are seeking your input on. Your information will influence how the trail will be used and where it will be located. We believe that this is an important step in creating an attractive trail that will promote economic and community vitality.

Please attend one of our meetings to speak with our project team representatives. **We would love to hear your input!**

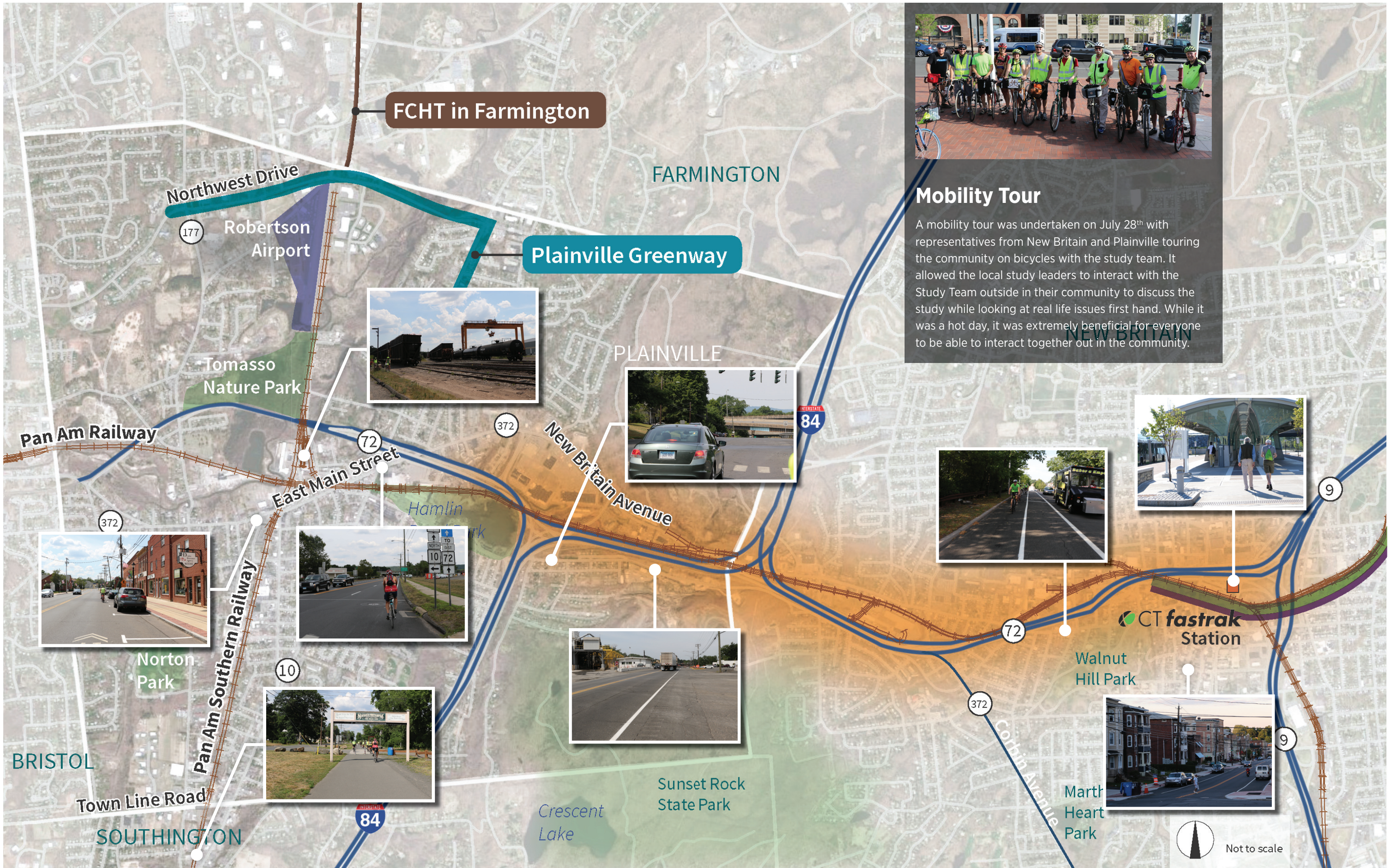
### UPCOMING MEETINGS

**Plainville**  
October 3, 2016 | 5:00-8:00pm  
**Plainville Public Library**  
56 East Main Street, Plainville

**New Britain**  
October 4, 2016 | 5:30-8:30pm  
**New Britain Public Library**  
20 High Street, New Britain

**Findings**  
October 6, 2016 | 6:00-7:00pm  
**New Britain City Hall, Rm 504**  
27 West Main St., New Britain





FCHT in Farmington

Plainville Greenway



### Mobility Tour

A mobility tour was undertaken on July 28<sup>th</sup> with representatives from New Britain and Plainville touring the community on bicycles with the study team. It allowed the local study leaders to interact with the Study Team outside in their community to discuss the study while looking at real life issues first hand. While it was a hot day, it was extremely beneficial for everyone to be able to interact together out in the community.



Not to scale